

Luminex® xMAP®

70

25 100

MILLIPLEX MAP Millipore

RIA, ELISA

25

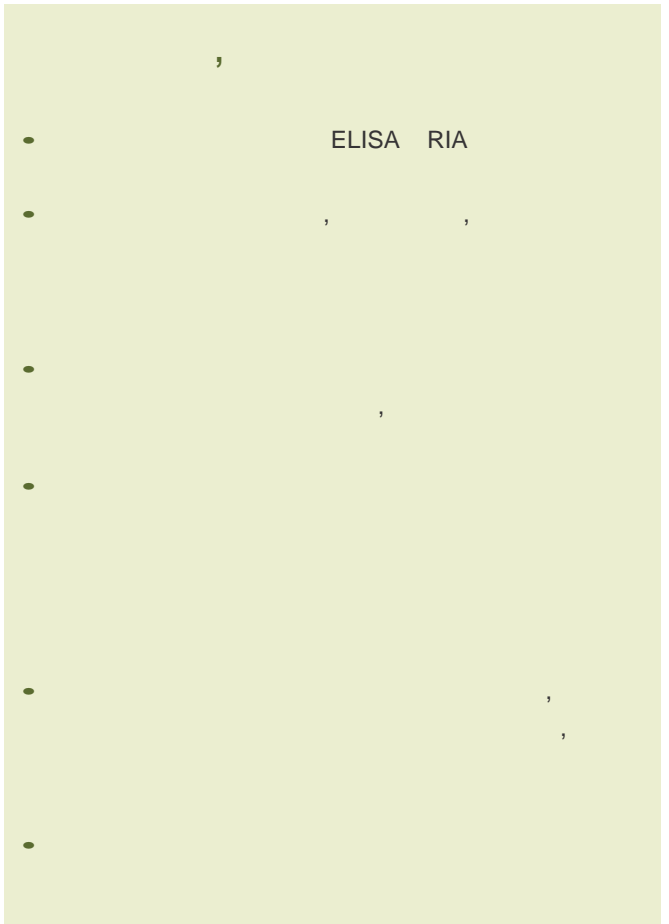
ELISA

MILLIPLEX™ MAP

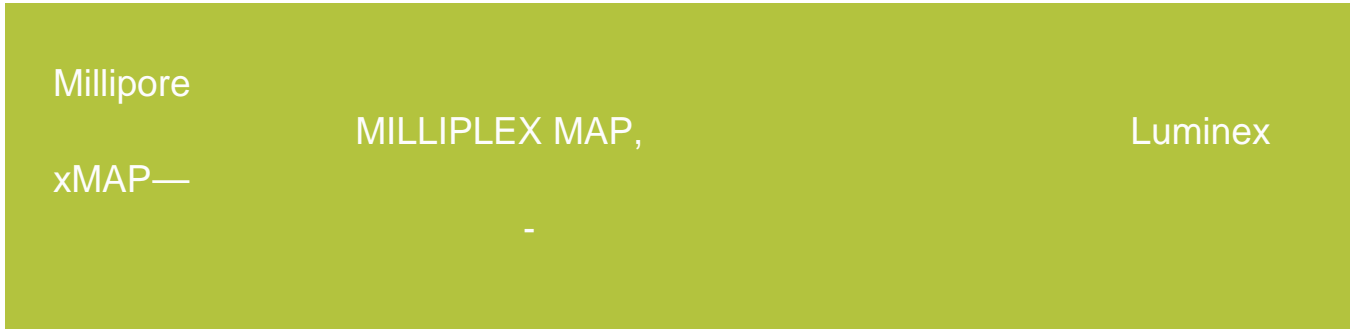




Millipore,
— RIA, ELISA
MILLIPLEX MAP —
Millipore
MAP
150
Luminex



Luminex xMAP



Millipore
xPONENT™,
MILLIPLEX Analyst*,
Luminex,
Luminex,
Luminex



MILLIPLEX | VigeneTech®

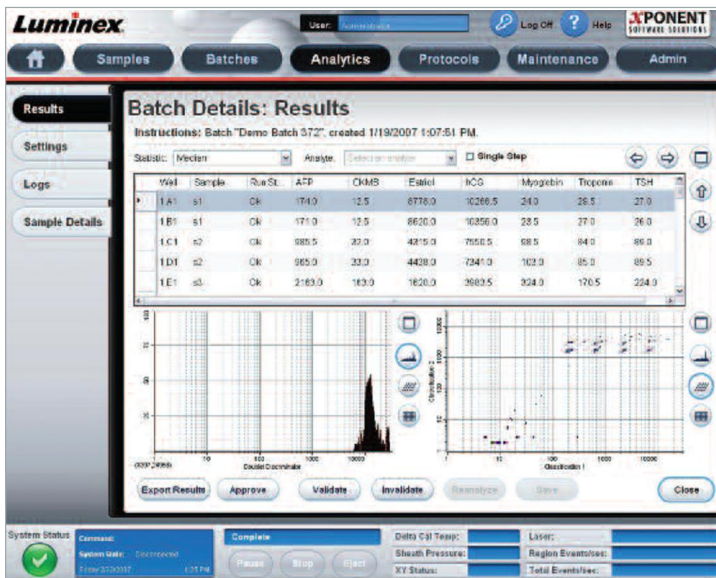
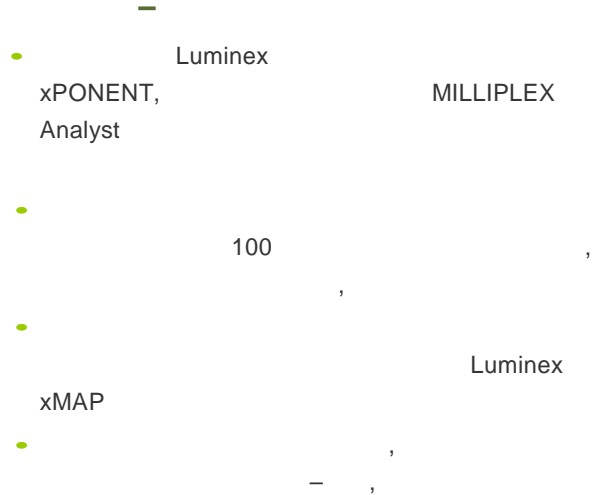
xMAP

<p>1 Luminex 100 « »</p>	<p>2 PE</p>	<p>3 PE –</p>

MILLIPLEX ANALYST

Luminex xPONENT

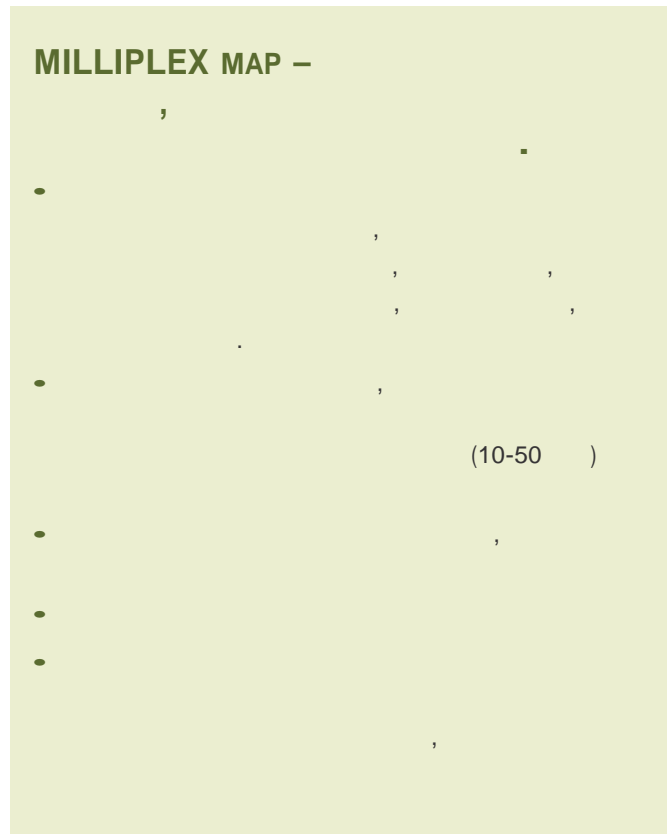
MILLIPLEX Analyst –



MILLIPLEX MAP



Luminex xMAP, Millipore
MILLIPLEX
MAP
(
)
MILLIPLEX MAP
Millipore
www.millipore.com/analytes





RIA, ELISA

Millipore.

MILLIPORE

RIA, ELISA

MILLIPORE

MILLIPLEX MAP.

– Millipore

Physiological Research, 2006,

2

PPAR- γ

PAI-1, sVCAM-1, sE-

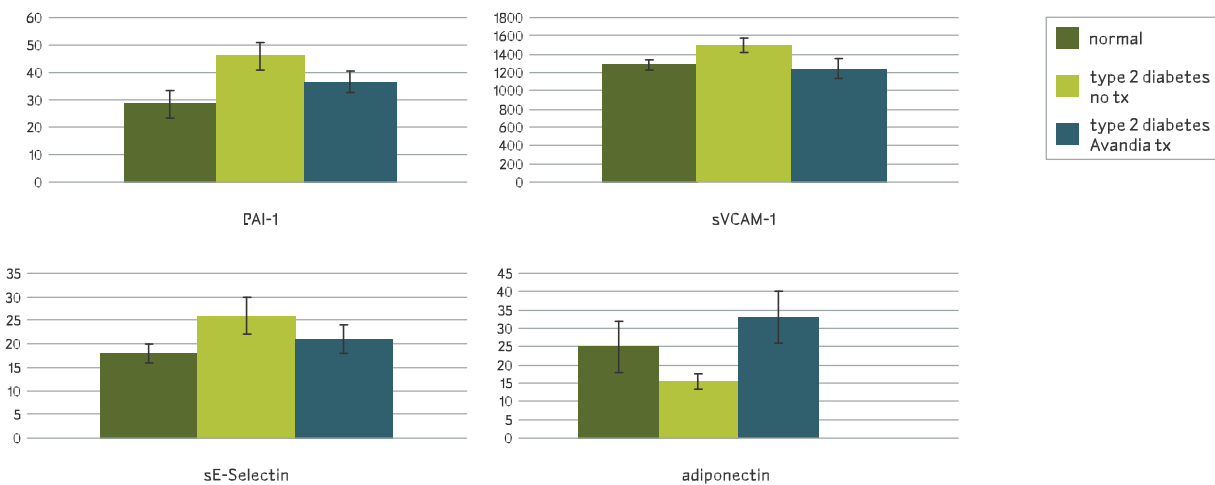
(Avandia)

5

2

MILLIPLEX MAP CVD1

R. Doležalová, M. Haluzík, L. Bořanská, Z. Lacinová, T. Stulc, M. Haluzík, *Physiological Research*, November 6 (2006)



RIA		
	Adiponectin	Human
	Adiponectin	Mouse
	β-Casomorphin	Bovine
	C-Peptide	Canine
	C-Peptide	Human
	C-Peptide	Porcine
	C-Peptide	Rat
	Ghrelin (active)	Human
	Ghrelin (total)	Human
	Glucagon	
	GLP-1 (active)	
	GLP-1 (total)	
	Growth Hormone	Porcine/Canine
	Growth Hormone	Rat
	Insulin	Lispro
	Insulin	Porcine
	Insulin	Rat
	Insulin	Sensitive Rat
	Insulin	Ultra Sensitive Human
	Insulin Specific	Human
	Leptin	Human
	Leptin	Mouse
	Leptin	Multi Species
	Leptin	Primate
	Leptin	Rat
	Leptin	Sensitive Human
	Pancreatic Polypeptide	Rat
	Proinsulin	Human
	PYY (total)	Human
	PYY	Rat/Mouse
	PYY (3-36) Specific	Human
	Resistin	Mouse

ELISA		
	Adiponectin•	Human
	Adiponectin – High Molecular Weight•	Human
	Adiponectin•	Mouse
	Adiponectin•	Rat
	Adiponectin•	Canine
	Amylin (active)	Human
	Amylin (total)	Human
	Apo A5•	Human
	C-Peptide•	Human
	Ghrelin (active)•	Human
	Ghrelin (total)•	Human
	Ghrelin (active)•	Rat/Mouse
	GIP (total)•	Human
	GIP (total)•	Rat/Mouse
	GLP-I (active)	
	Growth Hormone•	Rat/Mouse
	Insulin•	Human
	Insulin•	Human (Animal Serum Free)
	Insulin•	Rat/Mouse
	Proinsulin (Intact)•	Human
	Proinsulin (total)•	Human
	PYY (total)•	Human
	Leptin•	Mouse
	Leptin•	Rat
	Leptin “Dual Range”•	Human
	Pancreatic Polypeptide•	Human
	Procollagen Type IIA N-Propeptide† (PIIANP)•	Human
	Resistin•	Human
	Resistin•	Mouse

† U.S. Patent #:5,541,066;5,780,240

MILLIPLEX MAP

ELISA, RIA

MILLIPLEX MAP

	A	B
(/)	Adiponectin PAI-1 (active) PAI-1 (total) Resistin	IL-1β IL-6 IL-8 HGF Insulin Leptin MCP-1 NGF TNFα
(/)	IL-6 Insulin Leptin MCP-1	PAI-1 (total) Resistin TNFα
(/)	IL-1β IL-6 Insulin Leptin	MCP-1 PAI-1 (active) PAI-1 (total) TNFα
(/)	Adiponectin	Resistin
()	IL-1β IL-6 IL-8 Adiponectin HGF Leptin	MCP-1 PAI-1 (active) PAI-1 (total) Resistin NGF TNFα
()	IL-6 Adiponectin Leptin MCP-1	PAI-1 (total) Resistin TNFα
()	IL-1β IL-6 Adiponectin Leptin	MCP-1 PAI-1 (active) PAI-1 (total) TNFα
- 3plex	T3 T4	TSH
2plex	T3	T4
1plex	TSH	
,	Amylin (active) Amylin (total) C-Peptide GLP-1 (active)	Glucagon Insulin Leptin
,	Amylin (active) GLP-1 (active) Glucagon	Insulin Leptin
,	Amylin (active) GLP-1 (active) Glucagon	Insulin Leptin
,	GLP-1 Glucagon	Insulin Leptin
,	ACTH FSH GH	LH Prolactin TSH
,	ACTH BDNF FSH GH	LH Prolactin TSH
,	ACTH Corticosterone	Melatonin
	Adiponectin (Mouse) Adiponectin (Rat)	IGF-1 (Rat/Mouse)

CVD1,	Adiponectin MMP-9 MPO PAI-1 (total)	sE-Selectin sICAM-1 sVCAM-1
CVD2, ()	CRP Fibrinogen	Serum Amyloid A Serum Amyloid P
CVD3,	IL-1β IL-6 IL-8 IL-10 IFNγ	MCP-1 NT-proBNP TNFα VEGF
1plex,	Fibrinogen	Haptoglobin
	Apo AI Apo AII Apo B	Apo CII Apo CIII Apo E
CVD1,	MMP-9 PAI-1 (total) sE-Selectin	sICAM-1 sVCAM-1
CVD2,	Adiponectin Apo A1	Apo E Fibrinogen
1plex /	CRP	
CVD1,	IL-6 BNP MCP-1 MPO PAI-1 TIMP-1	TNFα Troponin I Troponin T VEGF von Willebrand Factor
CVD2,	E-Selectin	ICAM-1
CVD3,	Adiponectin	Fibrinogen

	Amylin (active) Amylin (total) Ghrelin (active) GIP (total) GLP-1 (active)	Insulin Leptin Pancreatic Polypeptide PYY (total)
	Amylin (active) Ghrelin (active) GIP (total) GLP-1 (active)	Insulin Leptin Pancreatic Polypeptide PYY (total)
	Amylin (active) Ghrelin (active) GIP (total) GLP-1 (active)	Insulin Leptin Pancreatic Polypeptide PYY (total)

MILLIPLEX MAP

Luminex xMAP

Millipore

c

Millipore –

25

()

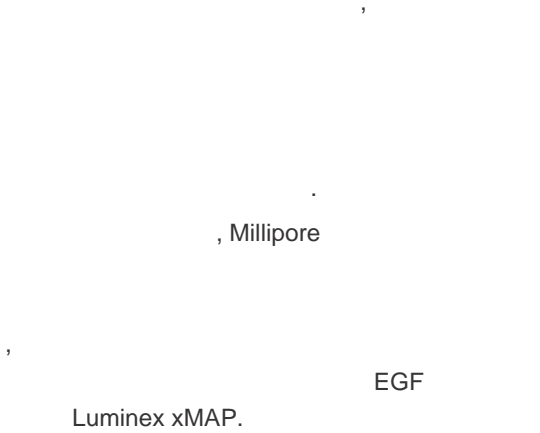
96-

1A,	PTH ACTH Insulin Leptin	OPG Osteocalcin Osteopontin
1B,	Adiponectin ACTH IL-1 β IL-6 Insulin Leptin	OPG Osteocalcin Osteopontin PTH TNF α
1plex,	RANKL	
1A,	ACTH IL-1 β IL-6 Insulin	Leptin OPG TNF α
2A	ACTH IL-1 β IL-6 Insulin	Leptin RANKL TNF α
1B,	ACTH IL-1 β IL-6 Insulin	Leptin OPG Osteocalcin TNF α
2B,	ACTH IL-1 β IL-6 Insulin	Leptin Osteocalcin RANKL TNF α
1plex,	OPG Osteocalcin	RANKL
1,	ACTH Insulin	Leptin OPG
2,	ACTH Insulin	Leptin RANKL
1plex,	OPG Osteocalcin	RANKL



MILLIPORE

-
-
- : 42
- : 13
- : 23
- : 32
- : 24
- : 14



LUMINEX xMAP

ANALYTES	sCD30	sEGFR	sgp130	sIL-1RI	sIL-1RII	sIL-2Rα	sIL-4R	sIL-6R	sRAGE	sTNF-RI	sTNF-RII	sVEGF-R1	sVEGF-R2	sVEGF-R3
Mouse	•		•	•	•	•	•	•	•	•	•	•	•	•
Human	•	•	•	•	•	•	•	•	•	•	•	•	•	•
Mouse Single Plex		•												

• - NEW analytes

MILLIPLEX MAP

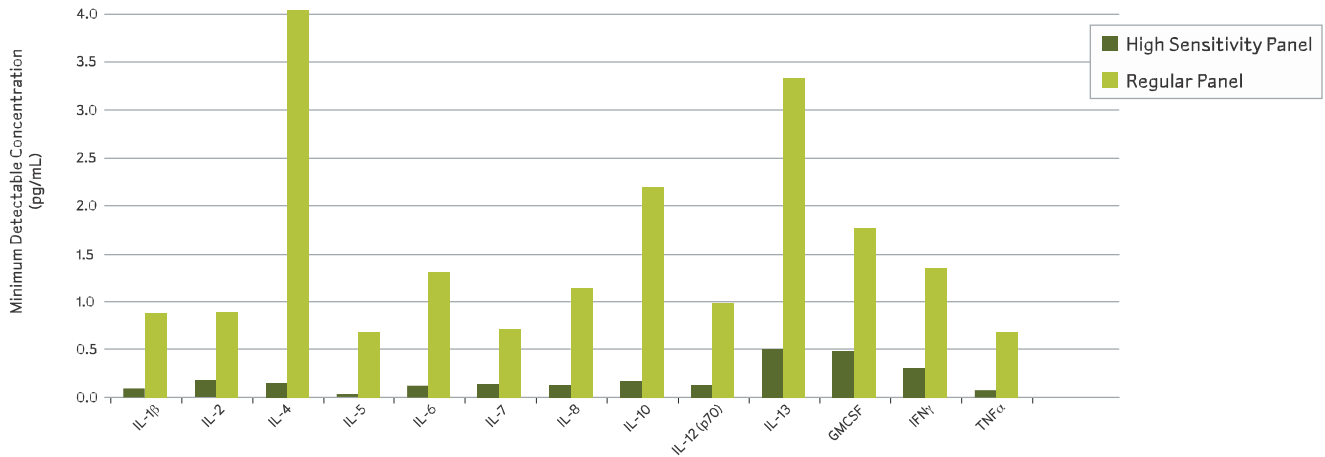
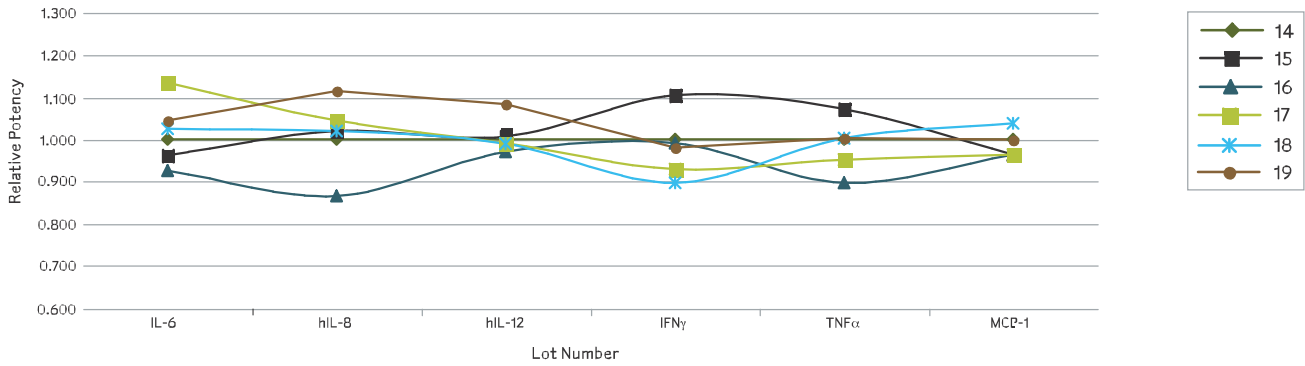
LUMINEX xMAP

ANALYTES	EGF	Eotaxin	FGF-2	Flt-3 Ligand	Fractalkine	G-CSF	GM-CSF	GRO	IFN α 2	IFN γ	IL-1 α	IL-1 β	IL-1ra	IL-2	IL-3	IL-4	IL-5	IL-6	IL-7	IL-8	IL-9	IL-10	IL-12 (p40)	IL-12/23 (p40)	IL-12 (p70)	IL-13
Mouse	•					•	•			•	•	•		•	•	•	•	•	•	•	•	•	•	•	•	•
Rat		•				•	•	•		•	•	•		•	•	•	•	•	•	•	•	•	•	•	•	•
Human	•	•	•	•	•	•	•	•	•	•	•	•	•	•	•	•	•	•	•	•	•	•	•	•	•	•
Human High Sensitivity							•		•	•	•	•		•	•	•	•	•	•	•	•	•	•	•	•	•
Primate									•	•	•	•		•	•	•	•	•	•	•	•	•	•	•	•	•
Canine							•		•	•				•	•	•	•	•	•	•	•	•	•	•	•	•

• - NEW analytes

ANALYTES	IL-15	IL-17	IL-18	IP-10	KC	Leptin	LIF	LIX	MCP-1	MCP-3	M-CSF	MDC	MIG	MIP-1 α	MIP-1 β	MIP-2	PDGF-AA	PDGF-AB/BB	RANTES	sCD40L	siL-2R α	TGF α	TNF α	TNF β	VEGF	
Mouse	•	•	•	•	•	•	•	•	•	•	•	•	•	•	•	•	•	•	•	•	•	•	•	•	•	•
Rat	•	•	•	•	•	•	•	•	•	•	•	•	•	•	•	•	•	•	•	•	•	•	•	•	•	•
Human	•	•	•	•	•	•	•	•	•	•	•	•	•	•	•	•	•	•	•	•	•	•	•	•	•	•
Human High Sensitivity									•	•	•	•	•	•	•	•	•	•	•	•	•	•	•	•	•	•
Primate	•	•	•	•	•	•	•	•	•	•	•	•	•	•	•	•	•	•	•	•	•	•	•	•	•	•
Canine	•	•	•	•	•	•	•	•	•	•	•	•	•	•	•	•	•	•	•	•	•	•	•	•	•	•

• - NEW analytes





Signaling Buffer Kit (

),

MILLIPLEX MAP

Luminex xMAP

Beadmate®

(

).

Akt/PKB (Thr308)	IκBα (Ser32) *	PDGF Receptor α (pan Tyr)
Akt/PKB (Ser473) *	IRS1 (pan Tyr) *	PDGF Receptor β (pan Tyr, mouse)
BAD (total only)	JNK (Thr183/Tyr185) *	Rsk1 (Ser380)
Active Caspase 3 (total only)	c-Jun (Ser73)	STAT3 (Tyr705) *
Active β-Catenin (total only)	c-Kit (pan Tyr) *	STAT3 (Ser727) *
CREB (Ser133) *	Lck (pan Tyr) *	STAT5A/B (Tyr694/699)
EGF-Receptor (pan Tyr) *	p38 (Thr180/Tyr182) *	STAT6 (Tyr641)
Erk/MAPK 1/2 (Thr185/Tyr187) *	p70 S6 Kinase (Thr412) *	ZAP-70 (pan Tyr)
HSP27 (Ser78) *	Cleaved PARP (total only)	

7-	:	,	-
CD3ε (pan Tyr)	LAT (pan Tyr)	ZAP-70 (pan Tyr)	
CREB (Ser133)	Lck (pan Tyr)		
Erk/MAPK 1/2 (Thr185/Tyr187)	Syk (pan Tyr)		

8-	:	,	-
CREB (Ser133)	JNK (Thr183/Tyr185)	STAT3 (Ser727)	
Erk/MAPK 1/2 (Thr185/Tyr187)	p38 (Thr180/Tyr182)	STAT5A/B (Tyr694/699)	
IκBα (Ser32)	p70 S6 Kinase (Thr412)		

Active Caspase 3 (total only)	Cleaved PARP (total only)	GAPDH * (total only)
-------------------------------	---------------------------	----------------------

* Total also available

Millipore

Millipore
MILLIPLEX MAP

Millipore

- 5-plex
 - MIF
 -
 -
 - OPN
 - CA-125

- 1-plex
 - IGF-II

Millipore

- VCAM-1
- ICAM-1
- PAI-1

- MIF

Fas

Fas

Millipore

Millipore

MILLIPLEX MAP

-
-
- -6

1,10,11

ELISA.



Для получения более подробной информации по продукции Millipore
пожалуйста, обращайтесь в Московское представительство компании:

117191 г.Москва, Ленинский пр. 113/1, оф. 718Е

Тел./факс:
(495) 931-91-91

www.millipore.com/offices

Millipore, Linco, Upstate, Beadlyte and LINCOPlex are registered trademarks of Millipore Corporation.

Beadmates, MILLIPLEX MAP, the M mark and Advancing Life Science Together are trademarks of Millipore Corporation.

Luminex and xMAP are registered trademarks of Luminex Corporation.

xPONENT is a trademark of Luminex Corporation.

VigeneTech is a registered trademark of VigeneTech, Inc.

PB1096EN00 Rev. C Printed in U.S.A. 08DD011

© 2008 Millipore Corporation, Billerica, MA 01821 All rights reserved.



Mixed Sources
Product group from well-managed
forests, controlled sources and
recycled wood or fiber

Cert no. XXX-XXX-000
www.fsc.org
© 1996 Forest Stewardship Council